

SEISMIC PROCESSING & ANALYSIS

GLOBAL SPECIALTIES

ACQUISITION NORMALIZATION

DATA REGULARIZATION AND RECONSTRUCTION TECHNIQUES

MULTIPLE SURVEY MERGES AND FOOTPRINT REMOVAL STRATEGIES

MAXIMIZING 3D SEISMIC VALUE

OFFSET AND AZIMUTHAL FRIENDLY PROCESSING

FRACTURE AND/OR PRESSURE FIELD PROXY ATTRIBUTES SEISFACIES ANALYSIS

FAR-ANGLE ANISOTROPY CHARACTERIZATION

FRACTURE AND DIFFERENTIAL PRESSURE DETECTION

MULTI-COMPONENT SHEAR-WAVE SPLITTING ANALYSIS

PRODUCTION AND STAGE-LEVEL COMPLETION OPTIMIZATION

"INVERSION READY GATHERS" AND WELL PERFORMANCE AND PRODUCTIVITY ANALYSIS

DYNAMIC RESERVOIR CHARACTERIZATION

4D TIME LAPSE PROCESSING

GLOBAL GEOPHYSICAL SERVICES

PROCESSING & ANALYSIS

Global delivers seismic data processing, analysis, interpretation and consulting services that enable the creation of high resolution insight into subsurface structure, rock properties, and reservoir dynamics. Our industry leading processing technologies provide our customers with crisp, more accurately imaged data for interpretation and truer amplitude fidelity in final offset azimuth gathers (inversion-ready gathers) for advanced reservoir analysis and characterization. Global's patented azimuthal scanning technology provides unique insights into anisotropy, fracture prediction and stress field characterization. We are also a recognized leader in multicomponent (3C/9C) & time lapse processing and in joint inversion. Global brings innovative workflows, advanced technologies and years of experience to ensure optimal imaging and characterization of even the most complex reservoirs and unconventional resources.

NOT ALL SEISMIC DATA IS CREATED EQUAL

Global Geophysical Services' RG3D Reservoir Grade 3D™ acquisition technology, combined with our integrated processing and analysis solutions, maximizes seismic image and reservoir characterization potential.

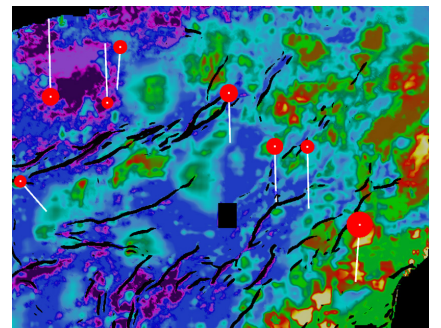
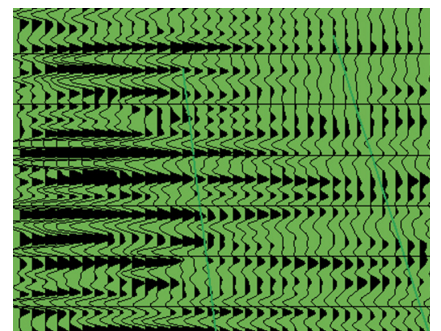
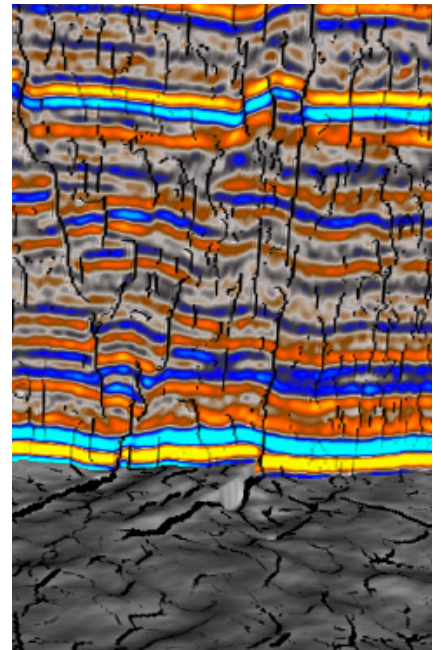
PROCESSING & ANALYSIS SOLUTIONS

- High-fidelity time and depth imaging including azimuthal velocity analysis
- P-wave and converted wave fracture prediction, and stress field analysis
- AVO prospecting and portfolio ranking
- Regional studies and reservoir characterization

Our technical team includes major-oil company trained geoscientists, as well as service company professionals with extensive field experience.

E&P INDUSTRY INNOVATION

Global Geophysical Services is leading the industry in geomechanical and reservoir characterization in both conventional and unconventional plays, an emergent technology that has become a critical production enabler to oil and gas E&P activities worldwide.





SEISMIC PROCESSING & ANALYSIS

CONTACT US

HOUSTON

13927 South Gessner Rd.
Missouri City, Texas 77489 USA
Phone: +1 713-972-9200
Fax: +1 713-972-1008

DALLAS

17103 Preston Rd., Suite 200
Dallas, Texas 75248 USA
Phone: +1 972-818-2550
Fax: +1 972-818-2553

DENVER

1625 Broadway St., Suite 1150
Denver, Colorado 80202 USA
Phone: +1 720-279-3600
Fax: +1 720-279-3605

CALGARY

1300, 736 - 6 Ave. SW
Calgary, Alberta,
Canada T2P 3T7
Phone: +1 403-237-7711
Fax: +1 403-237-7881

DUBAI

Suite #3302
Platinum Tower
Dubai, United Arab Emirates
Phone: +971 4-361-2278
Fax: +971 4-431-0261

BOGOTA

Troncal Panamericana #5
61E Parqué Industrial Puerto Vallarta
Bodega 4
Mosquera, Cundinamarca
Colombia
Phone: +571 893-3465

MIKE MELLEN

Vice President – E&P Services
bill.mclain@globalgeophysical.com

BILL MCLAIN

Vice President – Seismic Processing
bill.mclain@globalgeophysical.com

JAN VERMILYE

Manager – Ambient Seismic Processing & Interpretation
jan.vermilye@globalgeophysical.com

