

# SEISMIC PROCESSING & ANALYSIS

## GLOBAL SPECIALTIES

### ACQUISITION NORMALIZATION

DATA REGULARIZATION AND RECONSTRUCTION TECHNIQUES

### MULTIPLE SURVEY MERGES AND FOOTPRINT REMOVAL STRATEGIES

### MAXIMIZING 3D SEISMIC VALUE

OFFSET AND AZIMUTHAL FRIENDLY PROCESSING

### FRACTURE AND/OR PRESSURE FIELD PROXY ATTRIBUTES SEISFACIES ANALYSIS

FAR-ANGLE ANISOTROPY CHARACTERIZATION

### FRACTURE AND DIFFERENTIAL PRESSURE DETECTION

MULTI-COMPONENT SHEAR-WAVE SPLITTING ANALYSIS

### PRODUCTION AND STAGE-LEVEL COMPLETION OPTIMIZATION

"INVERSION READY GATHERS" AND WELL PERFORMANCE AND PRODUCTIVITY ANALYSIS

### DYNAMIC RESERVOIR CHARACTERIZATION

4D TIME LAPSE PROCESSING

## GLOBAL GEOPHYSICAL SERVICES

### PROCESSING & ANALYSIS

Global delivers seismic data processing, analysis, interpretation and consulting services that enable the creation of high resolution insight into subsurface structure, rock properties, and reservoir dynamics. Our industry leading processing technologies provide our customers with crisp, more accurately imaged data for interpretation and truer amplitude fidelity in final offset azimuth gathers (inversion-ready gathers) for advanced reservoir analysis and characterization. Global's patented azimuthal scanning technology provides unique insights into anisotropy, fracture prediction and stress field characterization. We are also a recognized leader in multicomponent (3C/9C) & time lapse processing and in joint inversion. Global brings innovative workflows, advanced technologies and years of experience to ensure optimal imaging and characterization of even the most complex reservoirs and unconventional resources.

### NOT ALL SEISMIC DATA IS CREATED EQUAL

Global Geophysical Services' RG3D Reservoir Grade 3D™ acquisition technology, combined with our integrated processing and analysis solutions, maximizes seismic image and reservoir characterization potential.

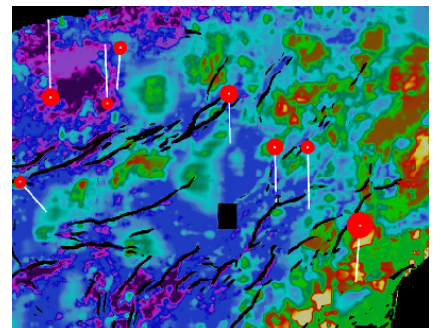
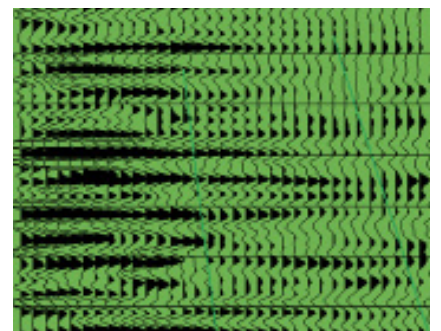
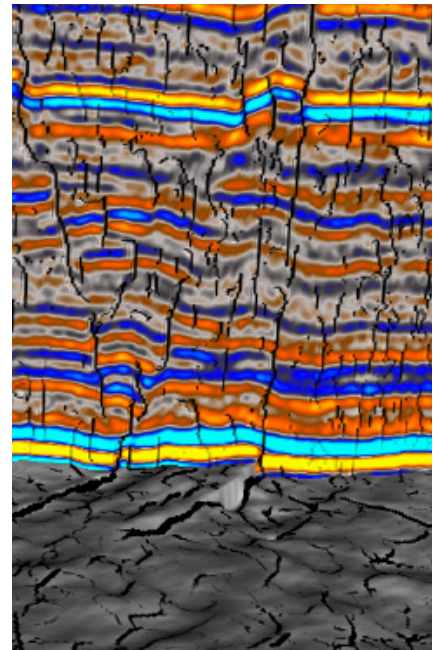
### PROCESSING & ANALYSIS SOLUTIONS

- High-fidelity time and depth imaging including azimuthal velocity analysis
- P-wave and converted wave fracture prediction, and stress field analysis
- AVO prospecting and portfolio ranking
- Regional studies and reservoir characterization

Our technical team includes major-oil company trained geoscientists, as well as service company professionals with extensive field experience.

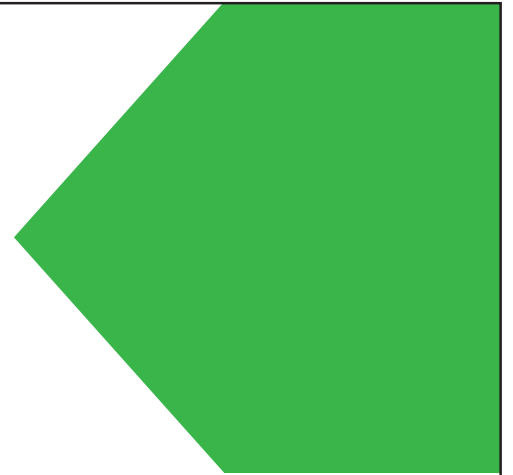
### E&P INDUSTRY INNOVATION

Global Geophysical Services is leading the industry in geomechanical and reservoir characterization in both conventional and unconventional plays, an emergent technology that has become a critical production enabler to oil and gas E&P activities worldwide.





# SEISMIC PROCESSING & ANALYSIS



## CONTACT US

### HOUSTON

13927 South Gessner Rd.  
Missouri City, Texas 77489 USA  
Phone: +1 713-972-9200  
Fax: +1 713-972-1008

### DALLAS

17103 Preston Rd., Suite 200  
Dallas, Texas 75248 USA  
Phone: +1 972-818-2550  
Fax: +1 972-818-2553

### DENVER

1625 Broadway St., Suite 1150  
Denver, Colorado 80202 USA  
Phone: +1 720-279-3600  
Fax: +1 720-279-3605

### CALGARY

1300, 736 - 6 Ave. SW  
Calgary, Alberta,  
Canada T2P 3T7  
Phone: +1 403-237-7711  
Fax: +1 403-237-7881

### BOGOTA

Troncal Panamericana #5  
61E Parqué Industrial Puerto Vallarta  
Bodega 4  
Mosquera, Cundinamarca  
Colombia  
Phone: +571 893-3465

### BILL MCLAIN

Vice President – Seismic Processing  
bill.mclain@globalgeophysical.com

### JAN VERMILYE

Manager – Ambient Seismic Processing & Interpretation  
jan.vermilye@globalgeophysical.com

