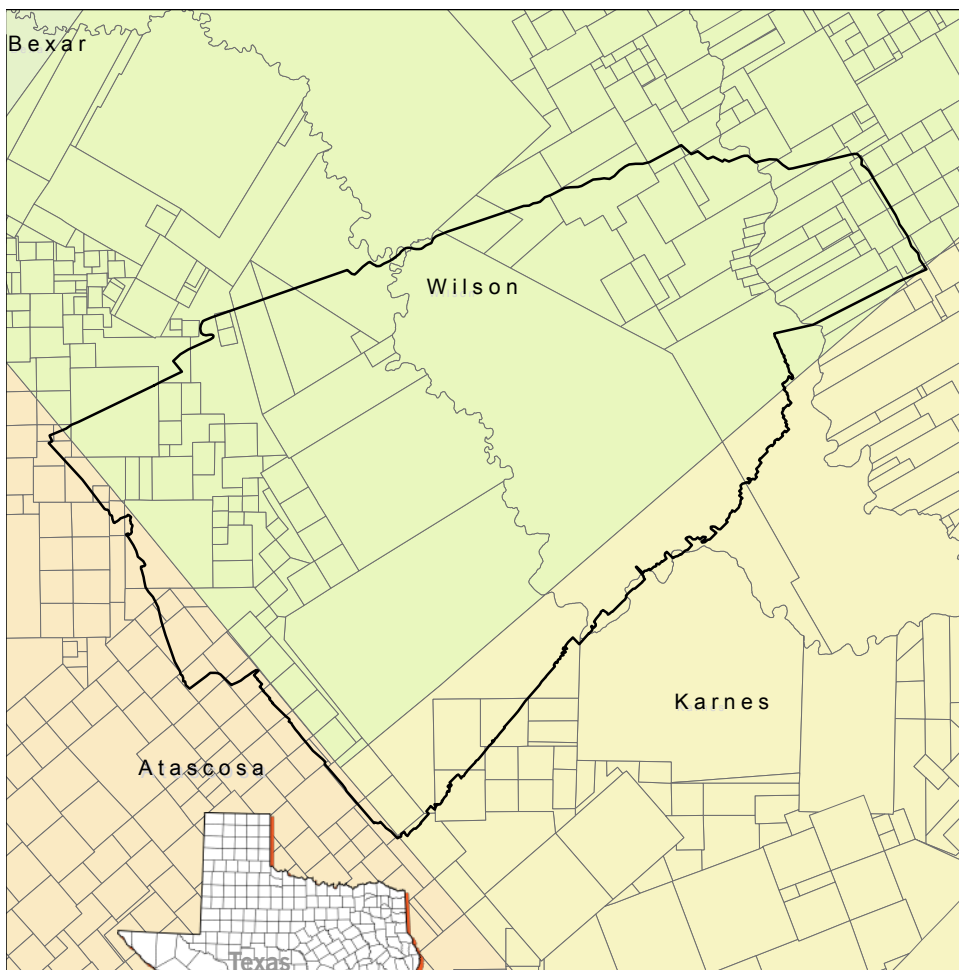


Wrangler RG3D[®]

284.1 Sq. Miles | Atascosa, Karnes, & Wilson Counties



Bin Size: 110 ft x 110 ft
Nominal Fold: 210

SOURCE PARAMETERS

Source Point Interval: 220 ft
Source Line Spacing: 880 ft
Energy Source: 3 vibrators
1 x 24 second sweeps

RECORDING PARAMETERS

Receiver Point Interval: 2010-110 ft
Receiver Point Interval: 2011-220 ft
Receiver Line Spacing: 1,320 ft
Recording Patch:
2010 - 20 lines x 330 receivers
2011 - 20 lines x 168 receivers
Record Length: 6 seconds

2010 Max Far Offset: 22,557 ft
2010 Max Far Offset Inline: 18,730ft
2010 Max Far Offset Crossline: 13,090 ft
2011 Max Far Offset: 22,572 ft
2011 Max Far Offset Inline: 18,370 ft
2011 Max Far Offset Crossline: 13,117 ft

Recording System: Sercel 408/428
2010 Sensor: DSU-3 multi-component accelerometers
2011 Geophones: 10 Hz, 6 per station

PROCESSING

Pre Stack Time Migration

Data current as of August 18, 2014

DATA OWNED BY:



DATA AVAILABLE

For complete
Multi Client Data Information:
www.globalgeophysical.com/MultiClient

DATA EXCLUSIVELY MARKETING BY:

GEOPHYSICAL PURSUIT, INC.

1740 Westheimer
Suite 200
Houston, TX 77098
(713) 529-3000

2895 Highway 190
Suite 227
Mandeville, LA 70471
(985) 727-6720

www.geopursuit.com

